

If you still have questions after reviewing these instructions, please feel free to call us at (616) 531-9367. **NOTE: Template is attached to the Glass Crate.**

**Step 1:** Choose where you would like to install your VuEase®. Measure the area making sure the glass is smaller than the space on your wall.

**Step 2:** Insert each of the mounting screws a few turns into the VuEase® backer using the angled pre-drilled holes. Make sure they point at a downward angle. (When screwed into the wall the angle will give extra support.)

**Step 3:** Align the center of the Template to the center of your mounting area. Use a level to make sure it is straight.

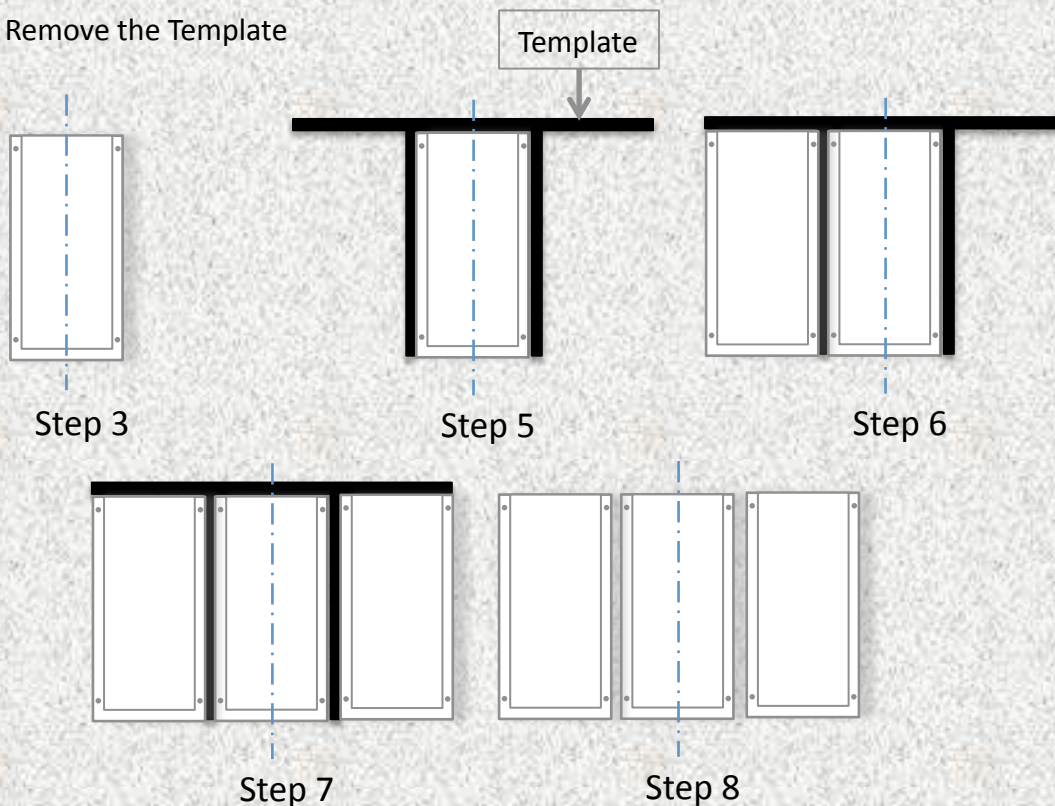
**Step 4:** Hold the backer tightly to the wall with one hand; with the other hand use a driver, and turn each screw into the wall. (It is NOT necessary to mount into a stud or have anchors in the wall)

**Step 5:** Straddle the template over the first backer.

**Step 6:** Position and install the second backer using the template. Repeat Step 4.

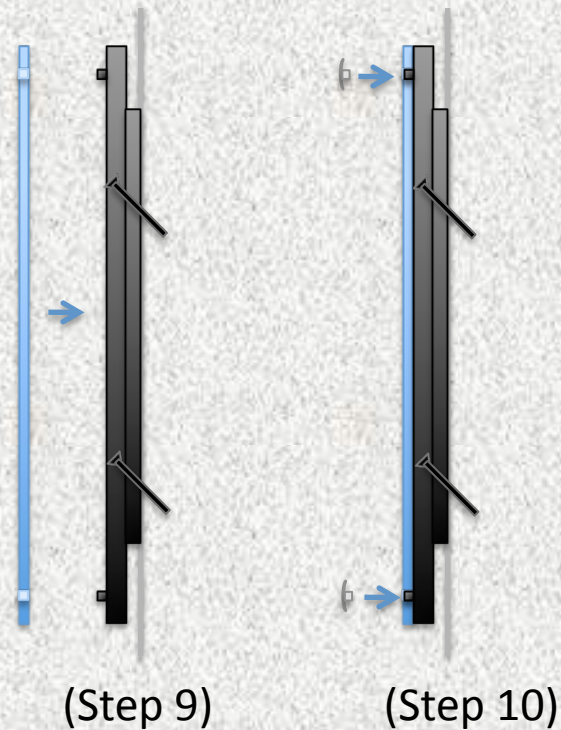
**Step 7:** Position and install the third backer using the template. Repeat Step 4.

**Step 8:** Remove the Template



Step 9: Position the glass aligning to the glass mounting studs.

Step 10: Attach the glass with low profile mounting caps, hand tightening with rubber disc.  
(rubber gripper disc is supplied with the order)



Step 11: Slide the provided insert into the top of your now fully assembled unit.